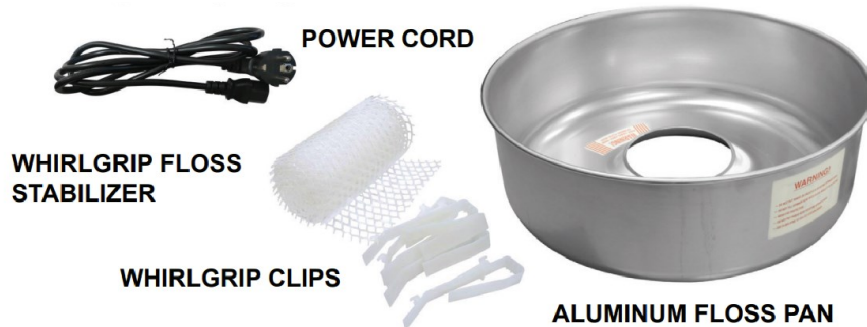


ITEMS INCLUDED



CONTROL FUNCTIONS



CANDY SWITCH

- Turns the motor and heating element ON/OFF.
- When turned OFF, the cooling cycle will start. The spinner head will stop rotating after 1 minutes, once the cooling cycle completes.

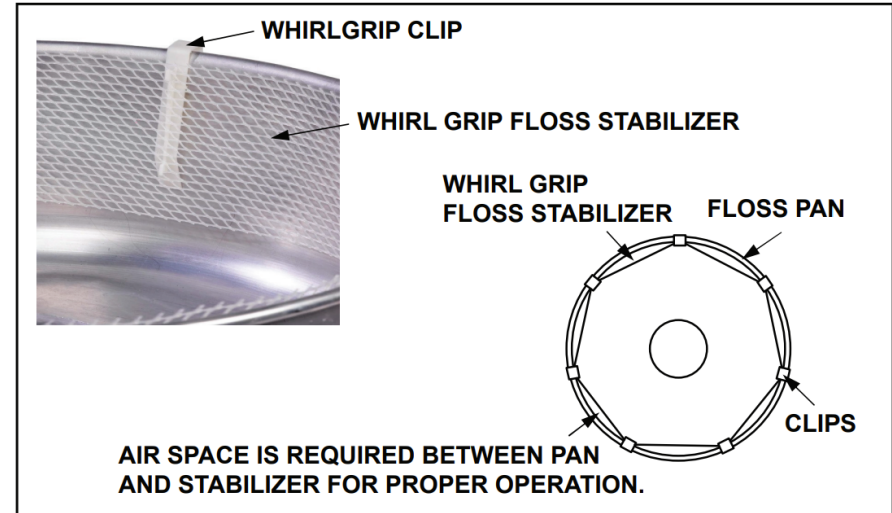
POWER SWITCH

- Supplies power to the Candy Switch. The green switch light ON indicates there is power to unit.
- **Immediate Power Off:** To bypass the cooling cycle and immediately remove power from machine, turn the Power Switch OFF.

AUTO COOLING LIGHT

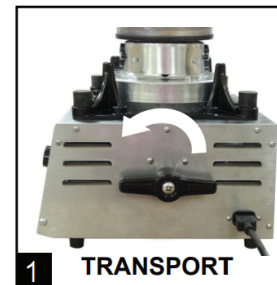
- When lit, this amber light indicates the unit is in the cooling cycle. During the cooling cycle the spinner head will remain spinning.

INSTALLATION OF FLOSS STABILIZER

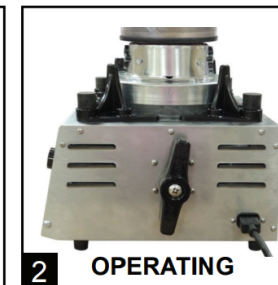


1. Place clips over the rim of the floss pan positioning the long side to the inside.
2. Hang the Whirl Grip Floss Stabilizer onto clips approximately flush with the top of the pan. Gently pull the stabilizer down and attach to the clip to secure in place.
3. Keep equal spacing around the pan for proper operation.

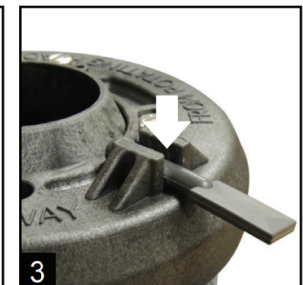
SET UP OF MACHINE



Rotate both Lock-N-Go handles from the transport position to the operating position. This allows the bell housing to "float" freely on the springs during operation.




NOTICE: Do not operate the floss machine with the handles in the transport position.




Check that the Rubber Floats are fully inserted in the float holders on the Quick Release Floss Cap.

ELECTRICAL REQUIREMENTS

	DANGER
	<ul style="list-style-type: none"> • Machine must be properly grounded to prevent electrical shock to personnel. Failure to do so could result in serious injury, or death. • Do not immerse any part of this equipment in water. • Do not use excessive water when cleaning. • Keep cord and plug off the ground and away from moisture. • Do not use an extension cord. • Always unplug the equipment before cleaning or servicing. • Make sure all machine switches are in the OFF position before plugging the equipment into the receptacle.

HOW TO MAKE FLOSS

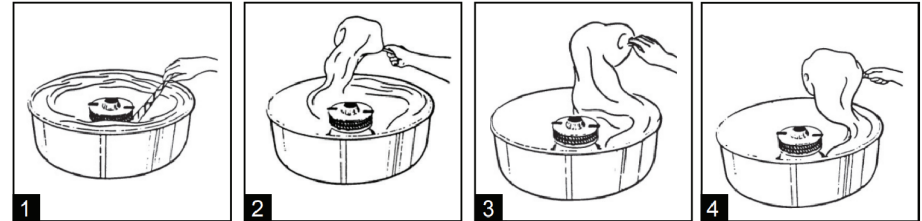
	CAUTION
	Keep hands away from spinning head!

1. With the Candy Switch OFF, turn the Power Switch ON. The spinner head will not start to rotate.
2. With the spinner head stopped, pour floss sugar into the spinner head. Fill to about 90% level. Do not Overfill. **NEVER add sugar while motor is running**
3. Turn the Candy Switch ON. The spinner head will rotate and heat. After about 30 seconds the machine will start to make cotton candy.
4. Follow Steps 1 - 6 on the Next Page to spin the cotton candy.
5. When the spinner head is empty or to stop making cotton candy, turn the Candy Switch OFF. The cooling cycle will start. When the cooling cycle completes the spinner head will stop rotating. When the spinner head is stopped, refill with floss sugar. Turn the Candy Switch ON and continue to make cotton candy.

NOTE:

- During cooling cycle spinner head will continue spinning. Do not use the Power Switch during normal operation of the machine. This will bypass the cooling cycle.
- Failure to cool down floss head will result in melted sugar that can burn.
- To quickly stop the machine, turn the Power Switch OFF.

WATCH TUTORIAL VIDEO HERE



1 Break into web of floss with the stick. Wind sugar onto the cone. 2 Lift web of floss from the pan and roll onto the cone until 3 4

TROUBLESHOOTING

PROBLEM	QUICK FIX
<i>Auto Cooling light is blinking during operation</i>	<ul style="list-style-type: none"> • There is low voltage supply to machine (less than 110V). Locate alternative power source.
<i>Excessive smoke</i>	<ul style="list-style-type: none"> • Do not bypass the cooling cycle. • Check the product mixture. For best results, use nothing with a corn-starch base. • Check the band for excessive sugar buildup and remove if needed.
<i>Excess vibration</i>	<ul style="list-style-type: none"> • Low on sugar Fill sugar to 90% full to obtain a balanced condition in the head and eliminate vibration. Do not add sugar with the motor running! • Foreign object or sugar lumps. Run the sugar completely out, then check for foreign objects or sugar lumps in the head assembly.
<i>Low production</i>	<ul style="list-style-type: none"> • Ensure that the unit is connected to an appropriate power source . Power source must be more than 110V. The use of extension cords is not recommended. • Ensure that foreign objects are removed from the spinner head to avoid any out-of-balance conditions.

BEFORE RETURNING

- A \$37.50 cleaning charge will apply to cotton candy machine if units are not returned in the same condition they were received.
- To avoid cleaning charges, run the floss head completely empty of sugar and turn the Candy Switch OFF letting the cooling cycle to start. Turn the Power switch OFF once the spinner head has stopped rotating to complete the cooling cycle.
- Never put water in the floss head. Wipe all surface with a damp cloth.